



Gannett Fleming

WebEMS Manager

Environmental Management Systems (EMS)



Gannett Fleming

www.gannettfleming.com

For more information on our WebEMS Manager, please contact:

Chuck Mason, CHMM
(804) 360-3087
pmason@gfnet.com

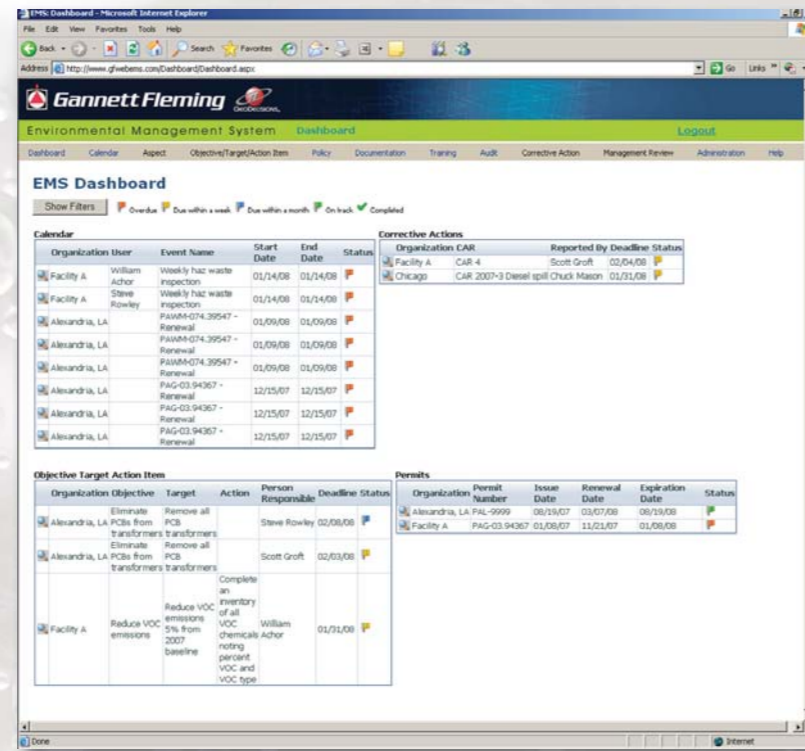
Steve Rowley, CHMM, EMS-LA
(717) 537-4155
srowley@gfnet.com

Mark Johnson
(978) 687-7292
mjohnson@gfnet.com



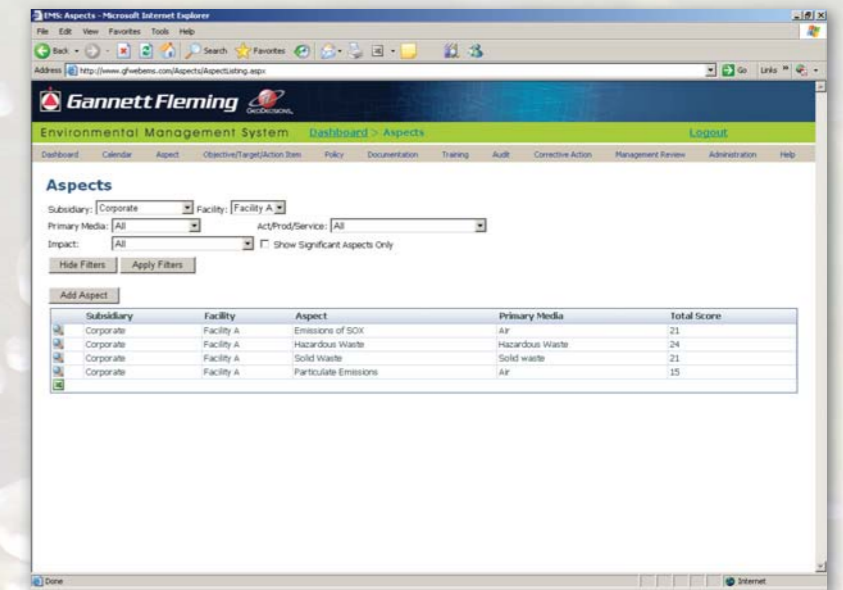
WebEMS Manager is a useful tool to help manage an organization's compliance and environmental impacts efficiently and effectively, and to improve environmental stewardship throughout the organization. This tool is appropriate for all kinds of organizations of varying sizes. An EMS encourages an organization to continuously improve its environmental performance. This application can benefit an organization in a number of ways:

- Improved capability to meet compliance requirements
- Minimizes paperwork and facilitates document control
- Enhanced communication regarding environmental issues
- Improved environmental awareness and involvement
- Enhanced ability to meet legal and other requirements



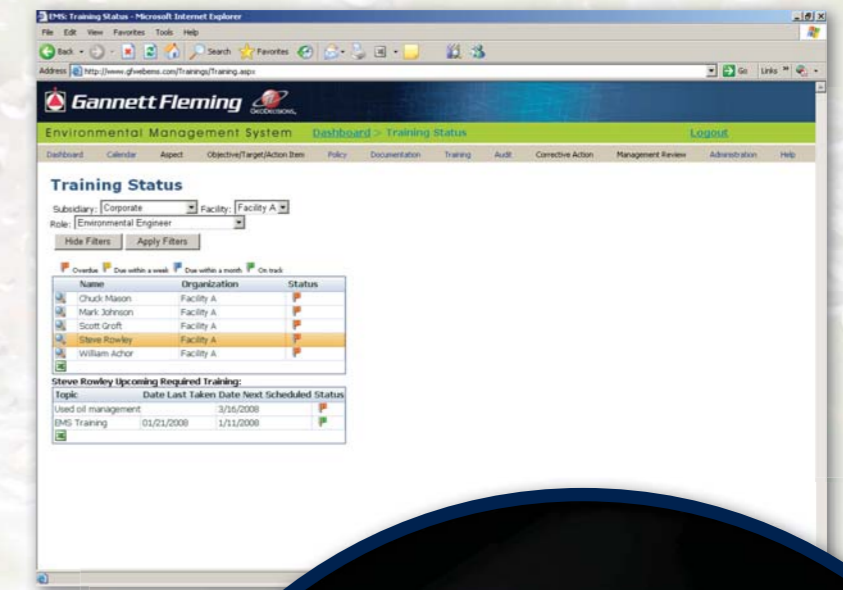
Environmental Aspects

- Maintain environmental aspects data
- Query data by aspect, category (waste, hazardous waste, air, wastewater, natural resources, and other) and area of operation or facility location
- Evaluate environmental aspects for significance using site-specific scoring criteria
- Link environmental aspects to operational control procedures
- Drop-down menus facilitate easy and quick data entry



Objectives, Targets and Programs

- Establish objectives and develop related programs
- Assign program tasks
- Track program tasks for completion



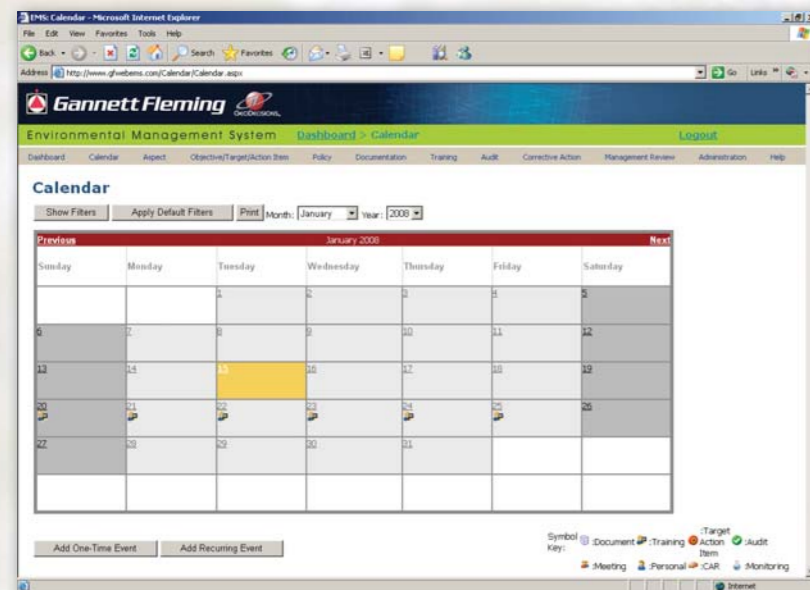
Training

- Identify and track training needs by job title and by employee
- Establish specific training programs for an individual employee, job title, department, or group
- Generate training status reports - training required, scheduled and completed

WebEMS Manager directs the user to the EMS requirements of policies, environmental aspects, documentation, objectives/targets, training, EMS audits, and corrective actions. The application features a user-specific dashboard presenting the user with their key information at a glance to view what elements need attention in real time. The application can be customized allowing the user the flexibility to develop and maintain requirements specific to their operation. Because Gannett Fleming can host this application, additional software or server capabilities are NOT required!

Compliance Calendar

- Enter compliance tasks specific to a particular facility or media
- See tasks out of compliance or behind schedule in real time
- Link to corrective actions in the EMS application
- Administer, monitor and document progress and completion of compliance - related events



Auditing and Corrective Actions

- Schedule and track auditing
- Link audit findings to corrective actions
- Initiate, assign, schedule and track corrective actions for completion

System Requirements

WebEMS Manager is a fully hosted, 24/7 secure application. Minimum requirements include a web browser, 256 MB RAM and a broadband Internet connection. No additional purchase of software or hardware is necessary.

